

Acta Crystallographica Section E

Structure Reports

Online

ISSN 1600-5368

(E)-4-Methoxy-2-(p-tolyliminomethyl)-phenol

 Başak Koşar,^a Arzu Özek,^b Çiğdem Albayrak^a and Orhan Büyükgüngör^{b*}
^aFaculty of Education, Sinop University, Sinop, Turkey, and ^bDepartment of Physics, Ondokuz Mayıs University, TR-55139 Samsun, Turkey
Correspondence e-mail: orhanb@omu.edu.tr

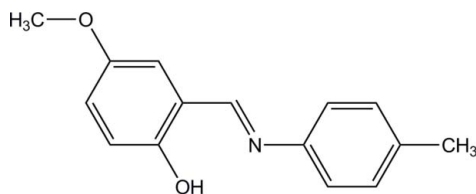
Received 13 January 2010; accepted 25 January 2010

 Key indicators: single-crystal X-ray study; $T = 296$ K; mean $\sigma(\text{C}-\text{C}) = 0.002$ Å; R factor = 0.043; wR factor = 0.127; data-to-parameter ratio = 15.5.

The molecule of the title compound, $\text{C}_{15}\text{H}_{15}\text{NO}_2$, adopts the enol-imine tautomeric form and has a strong intramolecular $\text{O}-\text{H}\cdots\text{N}$ hydrogen bond as a result. The molecule is almost planar, with a maximum deviation of 0.1038 (15) Å for the methoxy C atom. A weak $\text{C}-\text{H}\cdots\pi$ interaction and a weak $\text{C}-\text{H}\cdots\text{O}$ hydrogen bond are present in the crystal.

Related literature

For background to thermochromic Schiff bases, see: Moustakali-Mavridis *et al.* (1980). For related structures, see: Koşar *et al.* (2009); Tanak & Yavuz (2010).



Experimental

Crystal data

 $\text{C}_{15}\text{H}_{15}\text{NO}_2$
 $M_r = 241.28$
 Monoclinic, $P2_1/c$
 $a = 21.1680$ (9) Å
 $b = 4.7844$ (2) Å
 $c = 12.2759$ (4) Å
 $\beta = 92.859$ (3)°

 $V = 1241.71$ (8) Å³
 $Z = 4$
 Mo $K\alpha$ radiation
 $\mu = 0.09$ mm⁻¹
 $T = 296$ K
 $0.76 \times 0.52 \times 0.19$ mm

Data collection

 Stoe IPDS 2 diffractometer
 Absorption correction: integration
 (*X-RED32*; Stoe & Cie, 2002)
 $T_{\min} = 0.947$, $T_{\max} = 0.984$

 16465 measured reflections
 2627 independent reflections
 2223 reflections with $I > 2\sigma(I)$
 $R_{\text{int}} = 0.029$

Refinement

 $R[F^2 > 2\sigma(F^2)] = 0.043$
 $wR(F^2) = 0.127$
 $S = 1.08$
 2627 reflections
 169 parameters

 H atoms treated by a mixture of independent and constrained refinement
 $\Delta\rho_{\max} = 0.18$ e Å⁻³
 $\Delta\rho_{\min} = -0.17$ e Å⁻³
Table 1

Hydrogen-bond geometry (Å, °).

Cg1 is the centroid of the C9–C14 ring.

| $D-H\cdots A$ | $D-H$ | $H\cdots A$ | $D\cdots A$ | $D-H\cdots A$ |
|------------------------------------|----------|-------------|-------------|---------------|
| O1–H1 \cdots N1 | 0.93 (2) | 1.76 (2) | 2.6178 (14) | 151 (2) |
| C15–H15C \cdots Cg1 ⁱ | 0.96 | 2.66 | 3.5535 (16) | 156 |
| C7–H7B \cdots O2 ⁱⁱ | 0.96 | 2.57 | 3.496 (2) | 163 |

 Symmetry codes: (i) $x, y + 1, z$; (ii) $-x + 1, y - \frac{1}{2}, -z + \frac{3}{2}$.

Data collection: *X-AREA* (Stoe & Cie, 2002); cell refinement: *X-AREA*; data reduction: *X-RED32* (Stoe & Cie, 2002); program(s) used to solve structure: *SHELXS97* (Sheldrick, 2008); program(s) used to refine structure: *SHELXL97* (Sheldrick, 2008); molecular graphics: *ORTEP-3 for Windows* (Farrugia, 1997); software used to prepare material for publication: *WinGX* (Farrugia, 1999).

The authors acknowledge the Faculty of Arts and Sciences, Ondokuz Mayıs University, Turkey, for the use of the Stoe IPDS 2 diffractometer (purchased under grant F.279 of the University Research Fund).

Supplementary data and figures for this paper are available from the IUCr electronic archives (Reference: IS2517).

References

- Farrugia, L. J. (1997). *J. Appl. Cryst.* **30**, 565.
 Farrugia, L. J. (1999). *J. Appl. Cryst.* **32**, 837–838.
 Koşar, B., Albayrak, Ç., Odabaşoğlu, M. & Büyükgüngör, O. (2009). *Acta Cryst.* **C65**, o517–o520.
 Moustakali-Mavridis, I., Hadjoudis, B. & Mavridis, A. (1980). *Acta Cryst.* **B36**, 1126–1130.
 Sheldrick, G. M. (2008). *Acta Cryst.* **A64**, 112–122.
 Stoe & Cie (2002). *X-AREA* and *X-RED*. Stoe & Cie, Darmstadt, Germany.
 Tanak, H. & Yavuz, M. (2010). *J. Mol. Modeling*, **16**, 235–241.

supplementary materials

Acta Cryst. (2010). E66, o469 [doi:10.1107/S1600536810003028]

(*E*)-4-Methoxy-2-(*p*-tolyliminomethyl)phenol

B. Kosar, A. Özek, Ç. Albayrak and O. Büyükgüngör

Comment

Schiff bases are formed by reaction of a primary amine and an aldehyde and have a wide area of usage as ligands in coordination chemistry. Especially *o*-hydroxy Schiff base derivatives are important classes and have attracted the interest of chemists and physicist because of their photochromic and thermochromic features in the solid state. These features are caused by the proton transfer to N atom from O atom with light in photochromic or with temperature in thermochromic Schiff bases. It has been claimed that the molecules showing thermochromism are planar and showing photochromism are non-planar (Moustakali-Mavridis *et al.*, 1980). In general, *o*-hydroxy Schiff bases can be found at two possible tautomeric forms called as phenol-imine and keto-amine. Depending on these tautomers, two different types of intramolecular hydrogen bonding are visible in *o*-hydroxy Schiff bases: O—H \cdots N in phenol-imine and N—H \cdots O in keto-amine tautomers.

The molecular structure of the title compound is almost planar with maximum deviation of 0.1038 (15) Å for methyl C7 and exhibits an enol-imine tautomeric form, as indicated by the following bond lengths: C8=N1 [1.2757 (15) Å], C1—C8 [1.4514 (16) Å] and C2—O1 [1.3509 (15) Å]. These bond lengths are in a good agreement with observed for (*E*)-2-[(4-chlorophenyl)iminomethyl]-5-methoxyphenol [1.282 (2), 1.436 (2) and 1.3452 (18) Å; Koşar *et al.*, 2009], which is also an enol-imine tautomer. The same bond lengths are comparable with observed for (*E*)-2-[(2-hydroxy-5-nitrophenyl)iminomethyl]-4-nitrophenolate (1.288, 1.420 and 1.2749 Å; Tanak & Yavuz, 2010), which is a keto-amine tautomer.

As a result of enol-imine form of the molecule, there is a strong intramolecular hydrogen bond between O1 and N1 (Fig. 1). The three dimensional crystal structure is stabilized by one weak C—H \cdots π interaction ($Cg1$ is the centroid of the C9—C14 ring) and one weak C—H \cdots O hydrogen bond (between C7 and O2 of neighbor molecule) and van der Waals interactions (Figs. 2 & 3). Both intramolecular and intermolecular hydrogen bonding geometries can be seen in Table 1.

Experimental

The compound (*E*)-4-methoxy-2-[(*p*-tolylimino)methyl]phenol was prepared by reflux a mixture of a solution containing 5-methoxysalicylaldehyde (0.5 g, 3.3 mmol) in 20 ml ethanol and a solution containing 4-methylaniline (0.35 g, 3.3 mmol) in 20 ml ethanol. The reaction mixture was stirred for 1 h under reflux. The crystals of (*E*)-4-methoxy-2-[(*p*-tolylimino)methyl]phenol suitable for X-ray analysis were obtained from benzene by slow evaporation (yield 81%; m.p. 377–378 K).

Refinement

All H atoms except for H1 were refined using a riding model, with C—H distances of 0.96 Å for the methyl group and 0.93 Å for the aromatic groups. The displacement parameters of these H atoms were fixed at $1.2U_{eq}$ of their parent carbon atom for the aromatic groups and $1.5U_{eq}$ of their parent atoms for the methyl group.

Figures

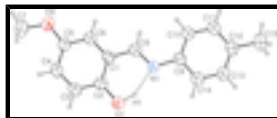


Fig. 1. A view of the title compound, with the atom-numbering scheme. Displacement ellipsoids are drawn at 50% probability and dashed line indicates intramolecular hydrogen bond.

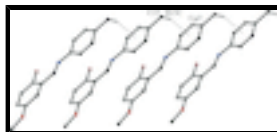


Fig. 2. A partial packing diagram for crystal structure, showing the C—H... π bonds as dashed lines. [Symmetry code: (i) $x, y + 1, z$.]

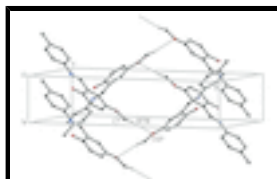


Fig. 3. A partial packing diagram for crystal structure, showing the C—H...O intermolecular bonds as dashed lines. [Symmetry code: (ii) $-x + 1, y - 1/2, -z + 3/2$.]

(*E*)-4-Methoxy-2-(*p*-tolyliminomethyl)phenol

Crystal data

$C_{15}H_{15}NO_2$

$M_r = 241.28$

Monoclinic, $P2_1/c$

Hall symbol: $-P\ 2ybc$

$a = 21.1680$ (9) Å

$b = 4.7844$ (2) Å

$c = 12.2759$ (4) Å

$\beta = 92.859$ (3)°

$V = 1241.71$ (8) Å³

$Z = 4$

$F(000) = 512$

$D_x = 1.291$ Mg m⁻³

Mo $K\alpha$ radiation, $\lambda = 0.71073$ Å

Cell parameters from 16465 reflections

$\theta = 1.7$ – 27.3 °

$\mu = 0.09$ mm⁻¹

$T = 296$ K

Prism, brown

$0.76 \times 0.52 \times 0.19$ mm

Data collection

Stoe IPDS 2
diffractometer

Radiation source: fine-focus sealed tube
graphite

Detector resolution: 6.67 pixels mm⁻¹

ω scans

Absorption correction: integration
(*X-RED32*; Stoe & Cie, 2002)

$T_{\min} = 0.947$, $T_{\max} = 0.984$

16465 measured reflections

2627 independent reflections

2223 reflections with $I > 2\sigma(I)$

$R_{\text{int}} = 0.029$

$\theta_{\max} = 26.8$ °, $\theta_{\min} = 1.9$ °

$h = -26 \rightarrow 26$

$k = -6 \rightarrow 6$

$l = -15 \rightarrow 15$

Refinement

| | |
|---------------------------------|--|
| Refinement on F^2 | Primary atom site location: structure-invariant direct methods |
| Least-squares matrix: full | Secondary atom site location: difference Fourier map |
| $R[F^2 > 2\sigma(F^2)] = 0.043$ | Hydrogen site location: inferred from neighbouring sites |
| $wR(F^2) = 0.127$ | H atoms treated by a mixture of independent and constrained refinement |
| $S = 1.08$ | $w = 1/[\sigma^2(F_o^2) + (0.0679P)^2 + 0.1706P]$ |
| 2627 reflections | where $P = (F_o^2 + 2F_c^2)/3$ |
| 169 parameters | $(\Delta/\sigma)_{\max} < 0.001$ |
| 0 restraints | $\Delta\rho_{\max} = 0.18 \text{ e } \text{\AA}^{-3}$ |
| | $\Delta\rho_{\min} = -0.17 \text{ e } \text{\AA}^{-3}$ |

Special details

Experimental. 331 frames, detector distance = 120 mm

Geometry. All e.s.d.'s (except the e.s.d. in the dihedral angle between two l.s. planes) are estimated using the full covariance matrix. The cell e.s.d.'s are taken into account individually in the estimation of e.s.d.'s in distances, angles and torsion angles; correlations between e.s.d.'s in cell parameters are only used when they are defined by crystal symmetry. An approximate (isotropic) treatment of cell e.s.d.'s is used for estimating e.s.d.'s involving l.s. planes.

Refinement. Refinement of F^2 against ALL reflections. The weighted R -factor wR and goodness of fit S are based on F^2 , conventional R -factors R are based on F , with F set to zero for negative F^2 . The threshold expression of $F^2 > \sigma(F^2)$ is used only for calculating R -factors(gt) *etc.* and is not relevant to the choice of reflections for refinement. R -factors based on F^2 are statistically about twice as large as those based on F , and R -factors based on ALL data will be even larger.

Fractional atomic coordinates and isotropic or equivalent isotropic displacement parameters (\AA^2)

| | x | y | z | $U_{\text{iso}}^*/U_{\text{eq}}$ |
|-----|-------------|-------------|--------------|----------------------------------|
| C1 | 0.30136 (5) | 0.2222 (2) | 0.54620 (9) | 0.0391 (3) |
| C2 | 0.30433 (6) | 0.1581 (3) | 0.43466 (9) | 0.0450 (3) |
| C3 | 0.34823 (7) | -0.0358 (3) | 0.40249 (10) | 0.0548 (4) |
| H3 | 0.3503 | -0.0789 | 0.3289 | 0.066* |
| C4 | 0.38887 (6) | -0.1658 (3) | 0.47753 (11) | 0.0512 (3) |
| H4 | 0.4183 | -0.2941 | 0.4543 | 0.061* |
| C5 | 0.38594 (6) | -0.1055 (3) | 0.58806 (10) | 0.0454 (3) |
| C6 | 0.34203 (6) | 0.0854 (3) | 0.62107 (10) | 0.0442 (3) |
| H6 | 0.3395 | 0.1235 | 0.6950 | 0.053* |
| C7 | 0.47395 (8) | -0.3961 (4) | 0.63806 (15) | 0.0720 (5) |
| H7A | 0.4571 | -0.5564 | 0.5996 | 0.108* |
| H7B | 0.4985 | -0.4560 | 0.7017 | 0.108* |
| H7C | 0.5004 | -0.2923 | 0.5913 | 0.108* |
| C8 | 0.25662 (5) | 0.4249 (3) | 0.58486 (9) | 0.0420 (3) |
| H8 | 0.2549 | 0.4552 | 0.6595 | 0.050* |
| C9 | 0.17663 (5) | 0.7627 (2) | 0.55871 (9) | 0.0400 (3) |

supplementary materials

| | | | | |
|------|-------------|-------------|--------------|------------|
| C10 | 0.17533 (6) | 0.8537 (3) | 0.66634 (10) | 0.0491 (3) |
| H10 | 0.2043 | 0.7827 | 0.7187 | 0.059* |
| C11 | 0.13125 (6) | 1.0488 (3) | 0.69553 (11) | 0.0503 (3) |
| H11 | 0.1312 | 1.1069 | 0.7678 | 0.060* |
| C12 | 0.08726 (6) | 1.1606 (3) | 0.62089 (11) | 0.0450 (3) |
| C13 | 0.08968 (6) | 1.0724 (3) | 0.51344 (11) | 0.0518 (3) |
| H13 | 0.0610 | 1.1455 | 0.4610 | 0.062* |
| C14 | 0.13368 (6) | 0.8786 (3) | 0.48282 (10) | 0.0488 (3) |
| H14 | 0.1345 | 0.8250 | 0.4101 | 0.059* |
| C15 | 0.03942 (7) | 1.3726 (3) | 0.65439 (13) | 0.0572 (4) |
| H15A | 0.0372 | 1.3706 | 0.7323 | 0.086* |
| H15B | -0.0013 | 1.3271 | 0.6211 | 0.086* |
| H15C | 0.0519 | 1.5551 | 0.6311 | 0.086* |
| N1 | 0.21955 (5) | 0.5626 (2) | 0.51970 (8) | 0.0419 (3) |
| O1 | 0.26517 (5) | 0.2806 (3) | 0.35863 (7) | 0.0651 (3) |
| O2 | 0.42372 (5) | -0.2245 (2) | 0.66971 (8) | 0.0639 (3) |
| H1 | 0.2419 (10) | 0.410 (5) | 0.3970 (18) | 0.103 (7)* |

Atomic displacement parameters (\AA^2)

| | U^{11} | U^{22} | U^{33} | U^{12} | U^{13} | U^{23} |
|-----|------------|-------------|-------------|-------------|-------------|-------------|
| C1 | 0.0390 (6) | 0.0401 (6) | 0.0385 (6) | -0.0012 (5) | 0.0060 (4) | -0.0015 (5) |
| C2 | 0.0475 (6) | 0.0508 (7) | 0.0370 (6) | 0.0051 (5) | 0.0050 (5) | 0.0012 (5) |
| C3 | 0.0614 (8) | 0.0640 (9) | 0.0398 (6) | 0.0124 (7) | 0.0105 (6) | -0.0048 (6) |
| C4 | 0.0478 (7) | 0.0540 (8) | 0.0527 (7) | 0.0110 (6) | 0.0108 (6) | -0.0052 (6) |
| C5 | 0.0430 (6) | 0.0469 (7) | 0.0463 (6) | 0.0032 (5) | 0.0009 (5) | 0.0010 (5) |
| C6 | 0.0461 (6) | 0.0484 (7) | 0.0382 (6) | 0.0032 (5) | 0.0028 (5) | -0.0037 (5) |
| C7 | 0.0635 (9) | 0.0716 (10) | 0.0799 (10) | 0.0261 (8) | -0.0057 (8) | -0.0009 (8) |
| C8 | 0.0441 (6) | 0.0438 (6) | 0.0384 (6) | 0.0015 (5) | 0.0045 (5) | -0.0033 (5) |
| C9 | 0.0389 (6) | 0.0384 (6) | 0.0429 (6) | -0.0010 (5) | 0.0049 (4) | -0.0010 (5) |
| C10 | 0.0505 (7) | 0.0535 (7) | 0.0430 (6) | 0.0096 (6) | -0.0008 (5) | -0.0044 (5) |
| C11 | 0.0550 (7) | 0.0505 (7) | 0.0458 (6) | 0.0047 (6) | 0.0063 (5) | -0.0074 (6) |
| C12 | 0.0427 (6) | 0.0358 (6) | 0.0573 (7) | -0.0022 (5) | 0.0104 (5) | 0.0002 (5) |
| C13 | 0.0520 (7) | 0.0495 (7) | 0.0535 (7) | 0.0096 (6) | -0.0026 (6) | 0.0037 (6) |
| C14 | 0.0541 (7) | 0.0499 (7) | 0.0422 (6) | 0.0067 (6) | 0.0017 (5) | -0.0014 (5) |
| C15 | 0.0541 (7) | 0.0439 (7) | 0.0748 (9) | 0.0063 (6) | 0.0152 (7) | -0.0006 (6) |
| N1 | 0.0421 (5) | 0.0425 (5) | 0.0416 (5) | 0.0025 (4) | 0.0053 (4) | -0.0013 (4) |
| O1 | 0.0743 (7) | 0.0839 (8) | 0.0369 (5) | 0.0305 (6) | -0.0001 (4) | -0.0002 (5) |
| O2 | 0.0612 (6) | 0.0753 (7) | 0.0545 (6) | 0.0256 (5) | -0.0038 (5) | 0.0009 (5) |

Geometric parameters (\AA , $^\circ$)

| | | | |
|-------|-------------|---------|-------------|
| C1—C6 | 1.3914 (17) | C8—H8 | 0.9300 |
| C1—C2 | 1.4077 (16) | C9—C14 | 1.3846 (17) |
| C1—C8 | 1.4514 (16) | C9—C10 | 1.3928 (17) |
| C2—O1 | 1.3509 (15) | C9—N1 | 1.4194 (15) |
| C2—C3 | 1.3843 (18) | C10—C11 | 1.3798 (18) |
| C3—C4 | 1.3772 (19) | C10—H10 | 0.9300 |
| C3—H3 | 0.9300 | C11—C12 | 1.3811 (18) |

| | | | |
|-------------|--------------|-----------------|--------------|
| C4—C5 | 1.3917 (18) | C11—H11 | 0.9300 |
| C4—H4 | 0.9300 | C12—C13 | 1.3882 (19) |
| C5—O2 | 1.3741 (15) | C12—C15 | 1.5050 (17) |
| C5—C6 | 1.3782 (17) | C13—C14 | 1.3796 (18) |
| C6—H6 | 0.9300 | C13—H13 | 0.9300 |
| C7—O2 | 1.4130 (17) | C14—H14 | 0.9300 |
| C7—H7A | 0.9600 | C15—H15A | 0.9600 |
| C7—H7B | 0.9600 | C15—H15B | 0.9600 |
| C7—H7C | 0.9600 | C15—H15C | 0.9600 |
| C8—N1 | 1.2757 (15) | O1—H1 | 0.93 (2) |
| C6—C1—C2 | 118.93 (11) | C14—C9—C10 | 118.01 (11) |
| C6—C1—C8 | 119.39 (10) | C14—C9—N1 | 116.94 (10) |
| C2—C1—C8 | 121.68 (11) | C10—C9—N1 | 125.04 (11) |
| O1—C2—C3 | 119.41 (11) | C11—C10—C9 | 120.23 (12) |
| O1—C2—C1 | 121.45 (11) | C11—C10—H10 | 119.9 |
| C3—C2—C1 | 119.13 (11) | C9—C10—H10 | 119.9 |
| C4—C3—C2 | 121.17 (12) | C10—C11—C12 | 122.14 (12) |
| C4—C3—H3 | 119.4 | C10—C11—H11 | 118.9 |
| C2—C3—H3 | 119.4 | C12—C11—H11 | 118.9 |
| C3—C4—C5 | 120.12 (12) | C11—C12—C13 | 117.20 (11) |
| C3—C4—H4 | 119.9 | C11—C12—C15 | 121.35 (12) |
| C5—C4—H4 | 119.9 | C13—C12—C15 | 121.44 (12) |
| O2—C5—C6 | 115.88 (11) | C14—C13—C12 | 121.37 (12) |
| O2—C5—C4 | 124.94 (11) | C14—C13—H13 | 119.3 |
| C6—C5—C4 | 119.18 (12) | C12—C13—H13 | 119.3 |
| C5—C6—C1 | 121.45 (11) | C13—C14—C9 | 121.02 (12) |
| C5—C6—H6 | 119.3 | C13—C14—H14 | 119.5 |
| C1—C6—H6 | 119.3 | C9—C14—H14 | 119.5 |
| O2—C7—H7A | 109.5 | C12—C15—H15A | 109.5 |
| O2—C7—H7B | 109.5 | C12—C15—H15B | 109.5 |
| H7A—C7—H7B | 109.5 | H15A—C15—H15B | 109.5 |
| O2—C7—H7C | 109.5 | C12—C15—H15C | 109.5 |
| H7A—C7—H7C | 109.5 | H15A—C15—H15C | 109.5 |
| H7B—C7—H7C | 109.5 | H15B—C15—H15C | 109.5 |
| N1—C8—C1 | 122.08 (11) | C8—N1—C9 | 121.40 (10) |
| N1—C8—H8 | 119.0 | C2—O1—H1 | 105.0 (13) |
| C1—C8—H8 | 119.0 | C5—O2—C7 | 117.30 (11) |
| C6—C1—C2—O1 | 178.73 (12) | C14—C9—C10—C11 | 1.5 (2) |
| C8—C1—C2—O1 | -0.64 (19) | N1—C9—C10—C11 | -179.72 (11) |
| C6—C1—C2—C3 | -1.02 (19) | C9—C10—C11—C12 | 0.0 (2) |
| C8—C1—C2—C3 | 179.61 (12) | C10—C11—C12—C13 | -1.2 (2) |
| O1—C2—C3—C4 | -179.83 (13) | C10—C11—C12—C15 | 179.81 (12) |
| C1—C2—C3—C4 | -0.1 (2) | C11—C12—C13—C14 | 0.8 (2) |
| C2—C3—C4—C5 | 0.6 (2) | C15—C12—C13—C14 | 179.82 (12) |
| C3—C4—C5—O2 | 179.39 (13) | C12—C13—C14—C9 | 0.7 (2) |
| C3—C4—C5—C6 | 0.0 (2) | C10—C9—C14—C13 | -1.9 (2) |
| O2—C5—C6—C1 | 179.43 (11) | N1—C9—C14—C13 | 179.26 (12) |
| C4—C5—C6—C1 | -1.1 (2) | C1—C8—N1—C9 | -179.19 (10) |

supplementary materials

| | | | |
|-------------|--------------|--------------|--------------|
| C2—C1—C6—C5 | 1.62 (19) | C14—C9—N1—C8 | -173.10 (11) |
| C8—C1—C6—C5 | -179.00 (11) | C10—C9—N1—C8 | 8.12 (19) |
| C6—C1—C8—N1 | 177.85 (11) | C6—C5—O2—C7 | -172.88 (13) |
| C2—C1—C8—N1 | -2.79 (19) | C4—C5—O2—C7 | 7.7 (2) |

Hydrogen-bond geometry (\AA , $^\circ$)

Cg1 is the centroid of the C9–C14 ring.

| $D-H\cdots A$ | $D-H$ | $H\cdots A$ | $D\cdots A$ | $D-H\cdots A$ |
|------------------------------------|----------|-------------|-------------|---------------|
| O1—H1 \cdots N1 | 0.93 (2) | 1.76 (2) | 2.6178 (14) | 151 (2) |
| C15—H15C \cdots Cg1 ⁱ | 0.96 | 2.66 | 3.5535 (16) | 156 |
| C7—H7B \cdots O2 ⁱⁱ | 0.96 | 2.57 | 3.496 (2) | 163 |

Symmetry codes: (i) $x, y+1, z$; (ii) $-x+1, y-1/2, -z+3/2$.

Fig. 1

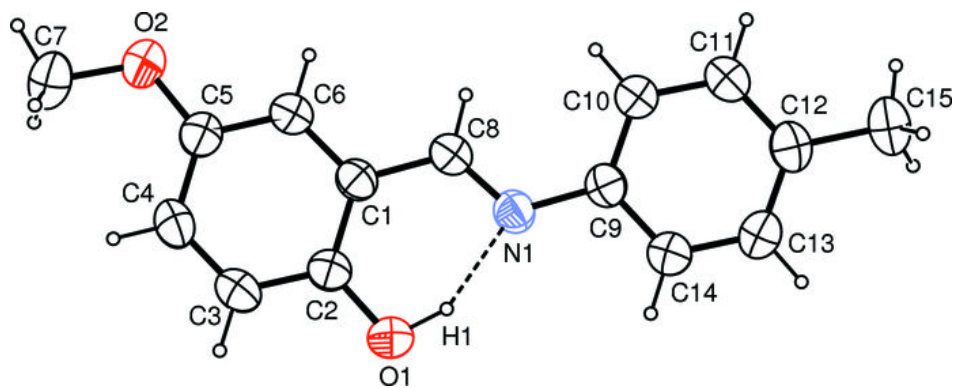


Fig. 2

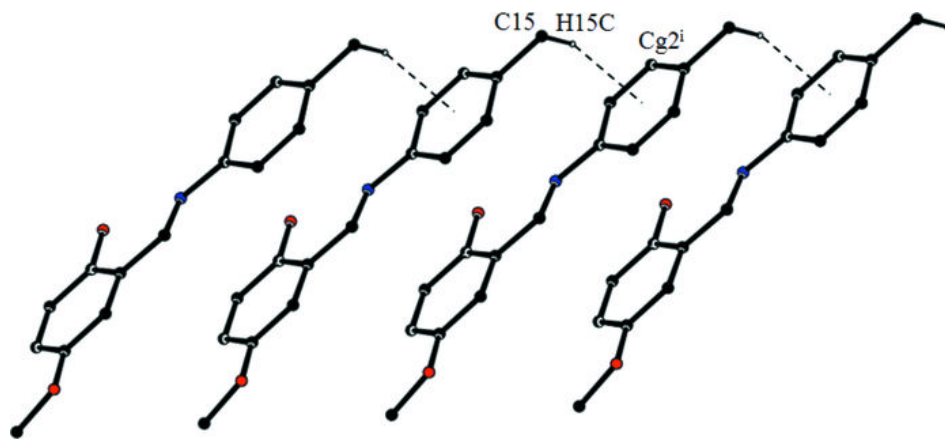


Fig. 3

